

5716

BAYSHORE

Suryan Residence

URBAN
ARENA







Location Location Location

Belmont Shore. Los Alamitos Bay.
Naples Island. The Peninsula. The
Strand. Long Beach.



5716 E. Bayshore Walk

In the heart of beach-life in
Southern California. Seconds to
2nd Street. Minutes to Orange
County. Steps to the Beach.



exterior inspiration



Coastal Beach Modern

Using a palette of natural wood tones, bright and clean stucco, and glass galore we are creating a style that is timeless with a geometry that is distinctly modern.





first floor • 1,826 sf



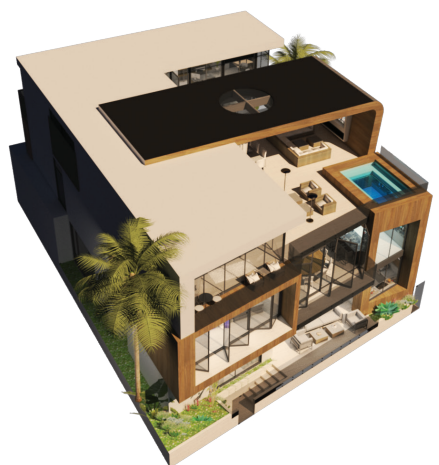
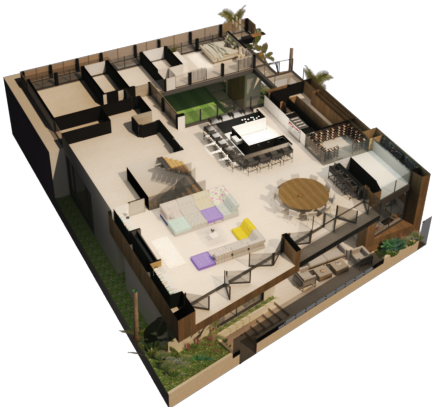
second floor • 3,032 sf



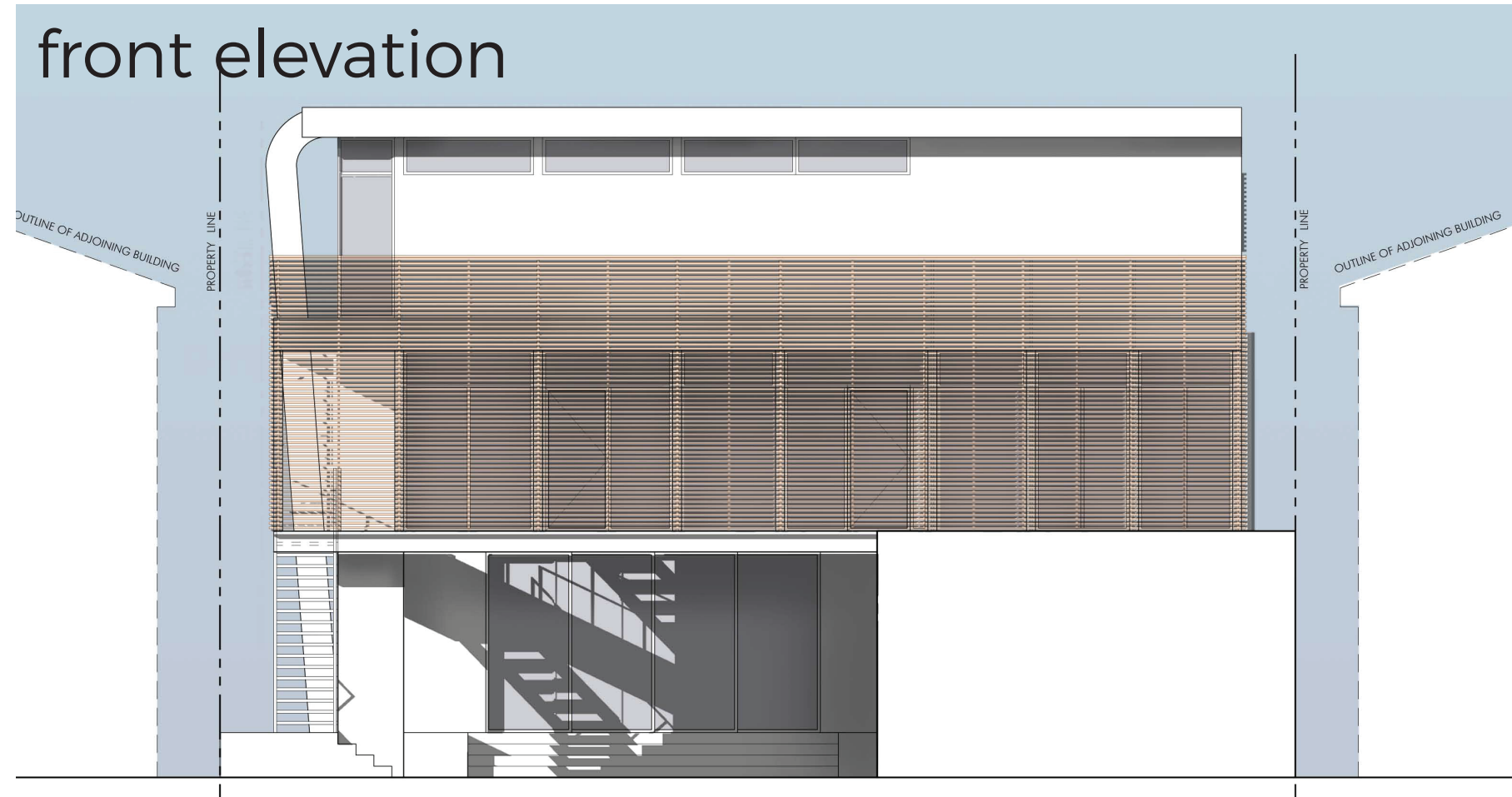
third floor • 1,902 sf

Experience a new Level

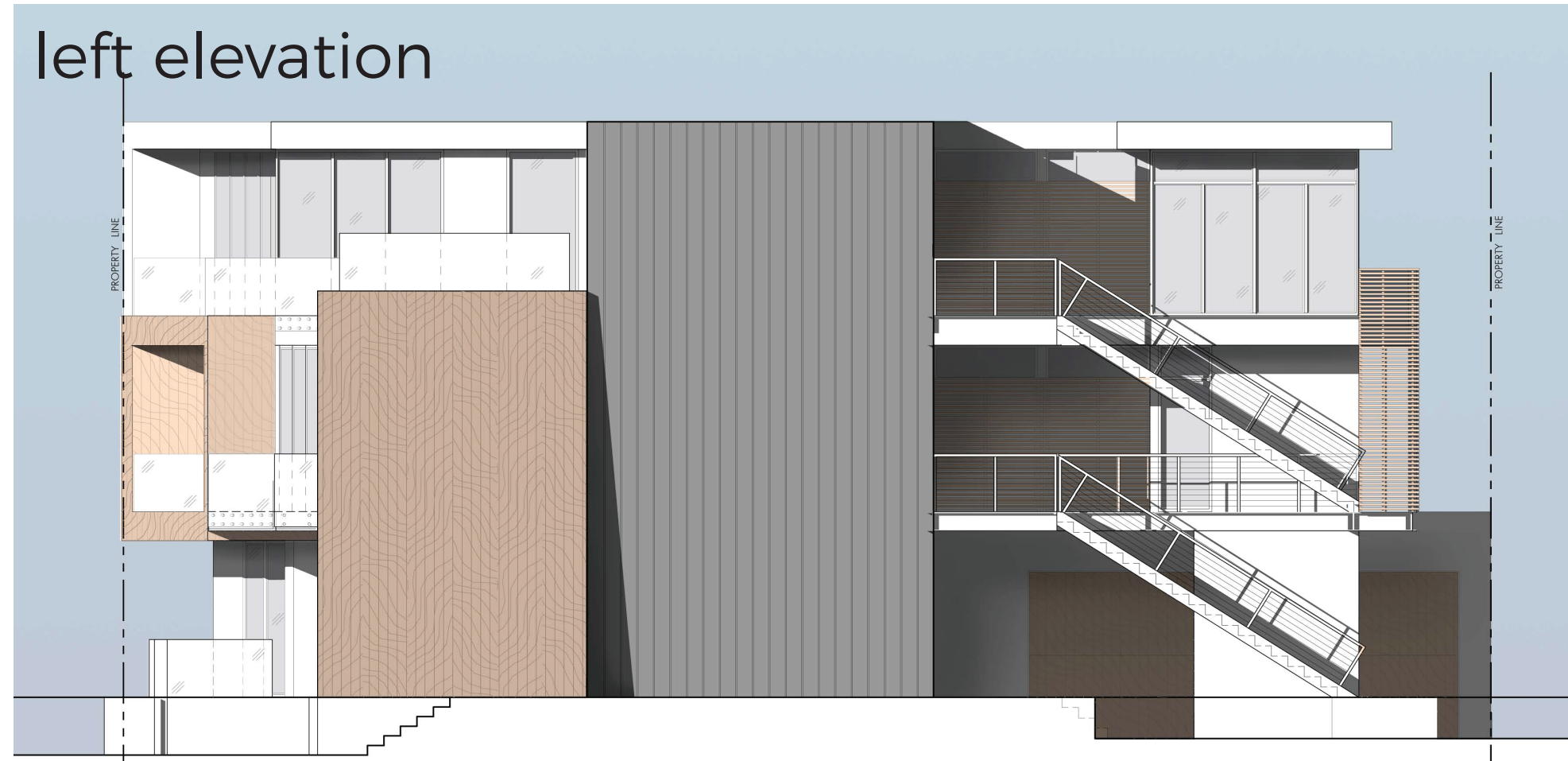
3 Floors- Each level providing its own excitement and purpose. The ground floor is dedicated to the beach. The middle to family. The third level becomes its own expansive master retreat



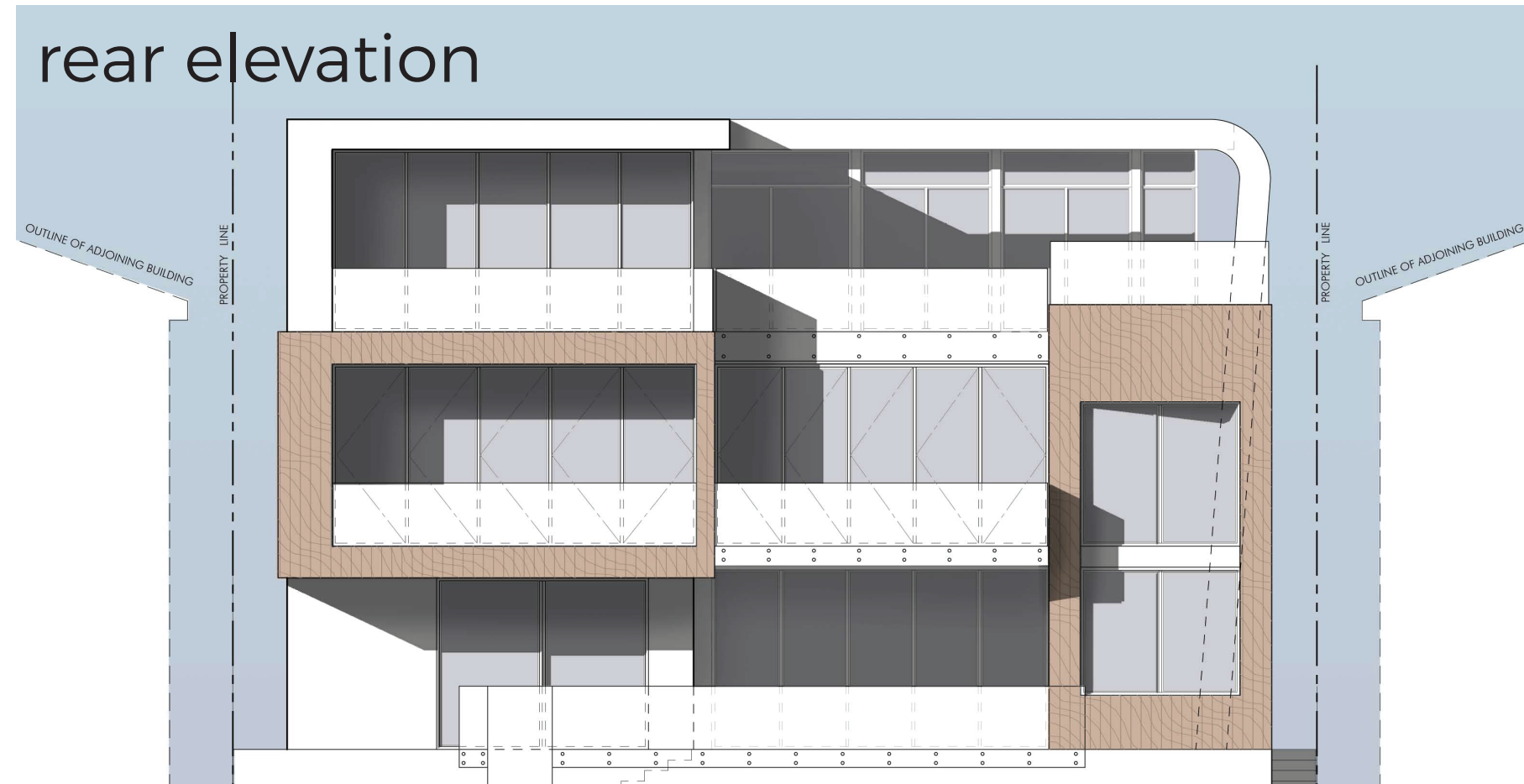
front elevation



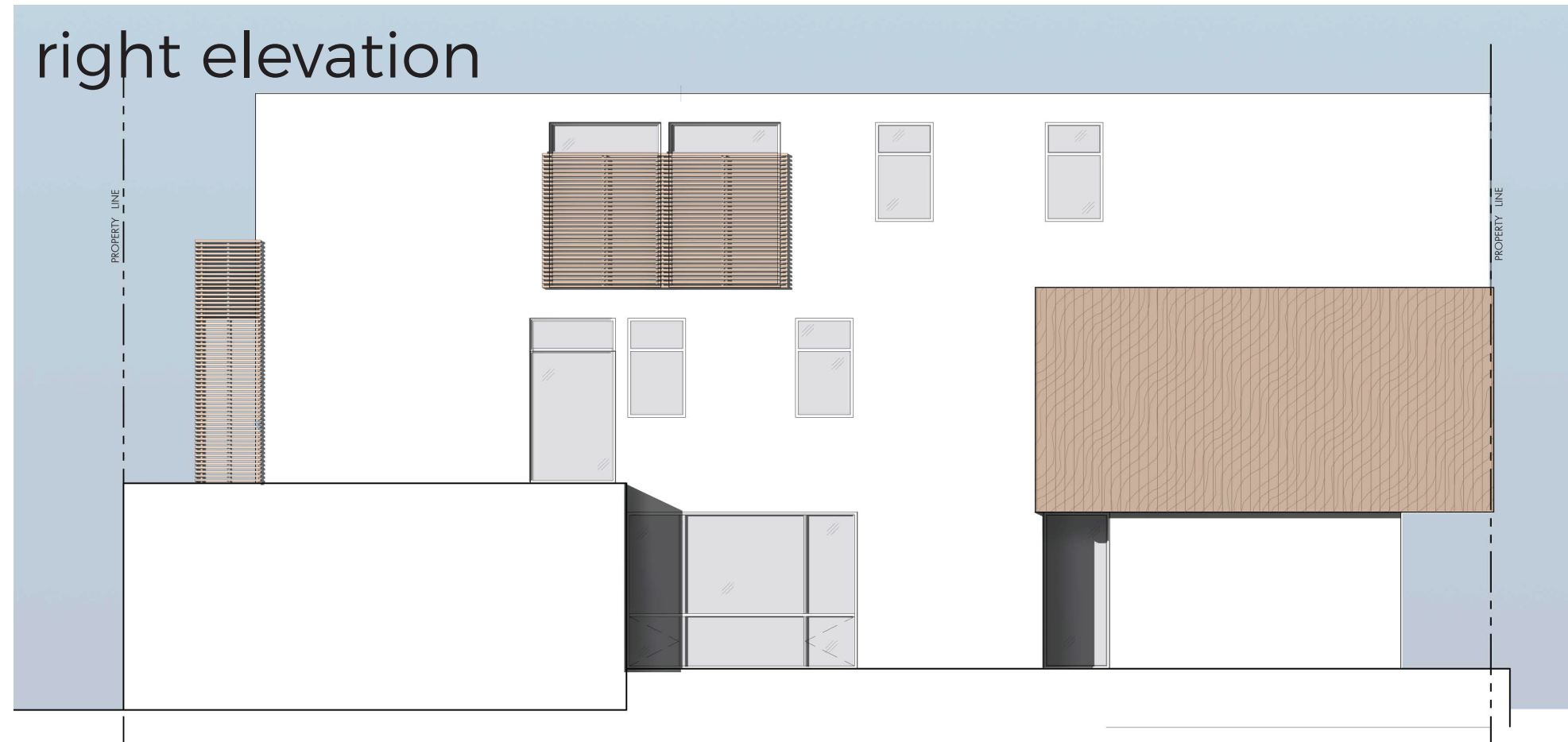
left elevation



rear elevation



right elevation



A Jewel From All Angles

Conceptualized and originally modeled in three dimensions, each side reveals its own beauty





hello.



Tranquility from afar



welcome
home







OPEN WIDE



The ground level is an all-inclusive beach club experience with front sun deck, indoor/outdoor BBQ and bar, entertainment room, guest suite and even a home gym.



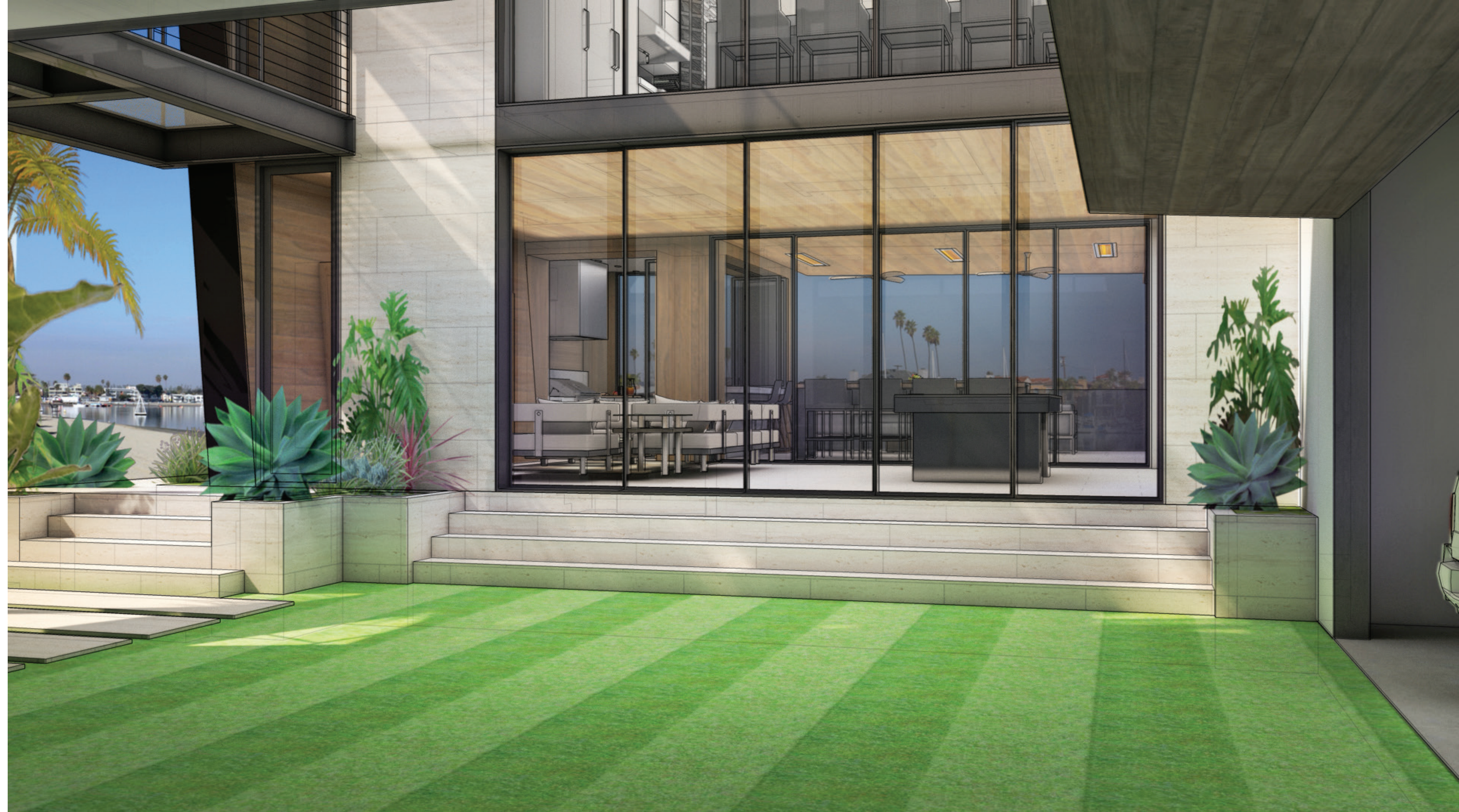
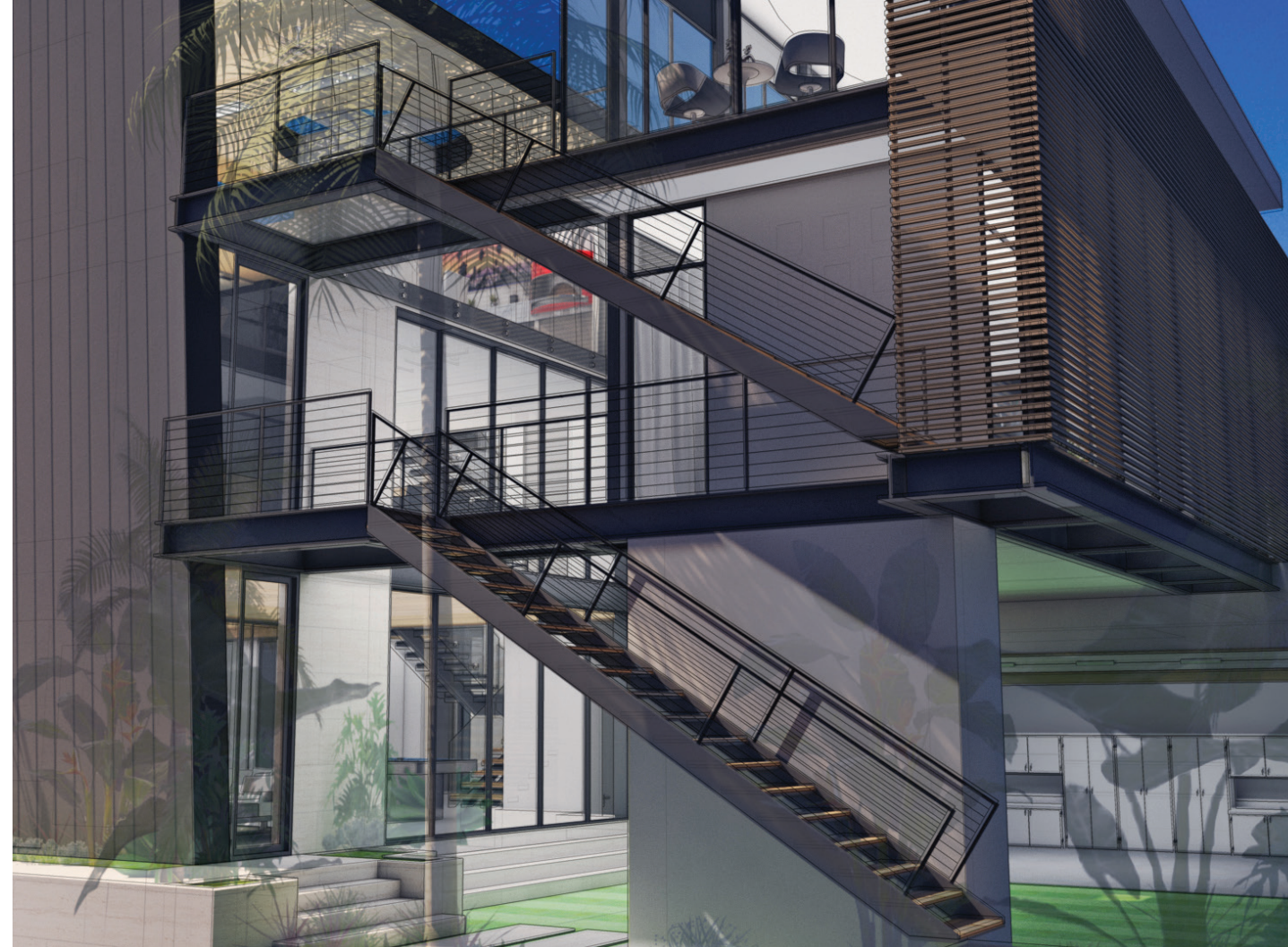
Beach.
Games.
BBQ.



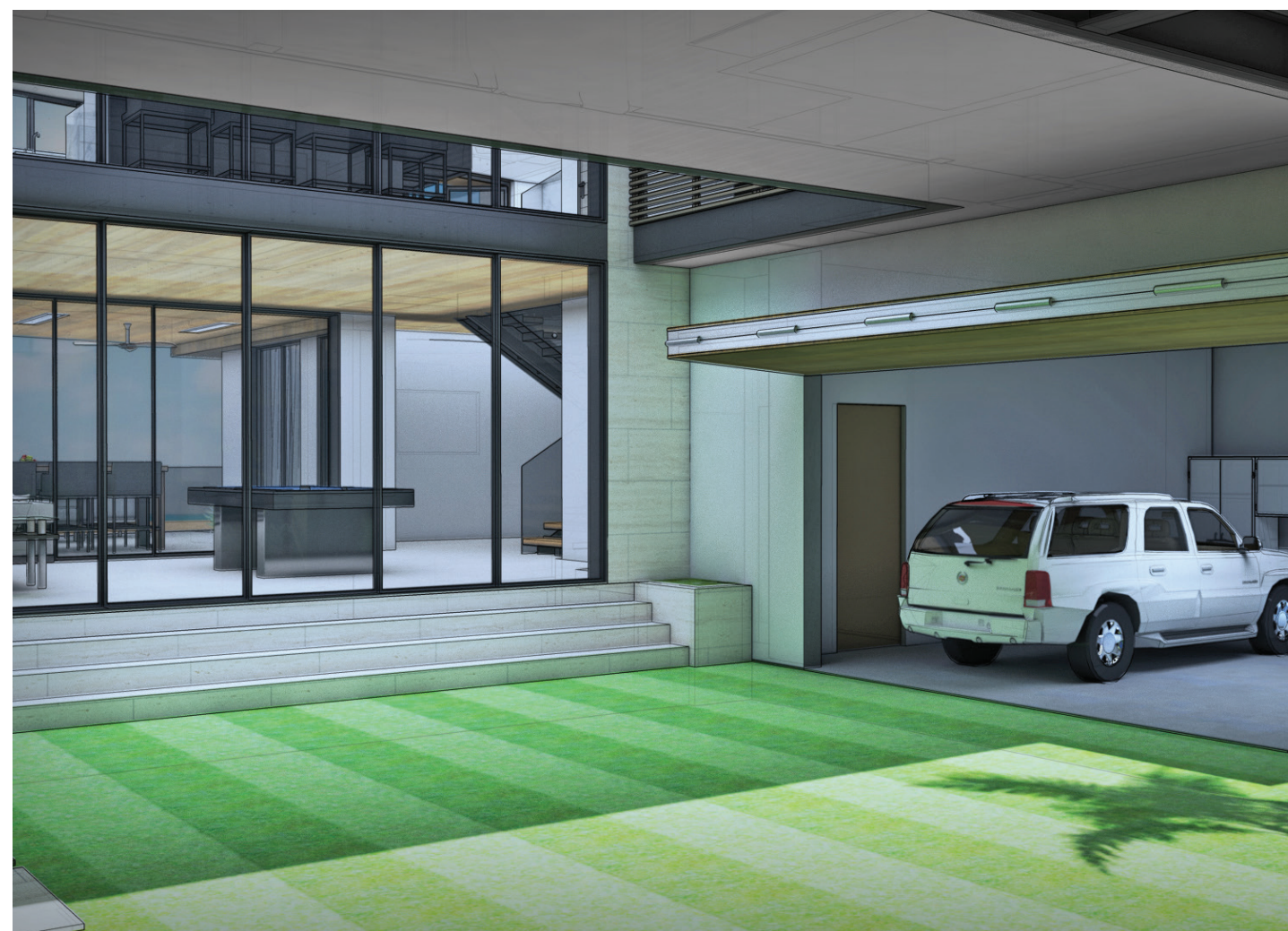
Guests Welcome

Adjacent to the beach deck with oceanfront views. For better or worse, your guests will never want to leave.

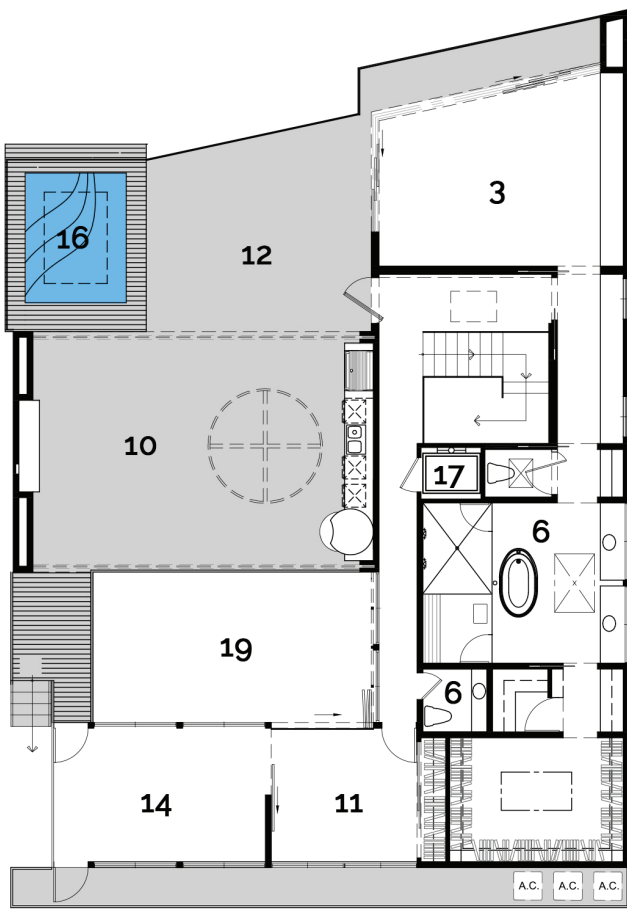
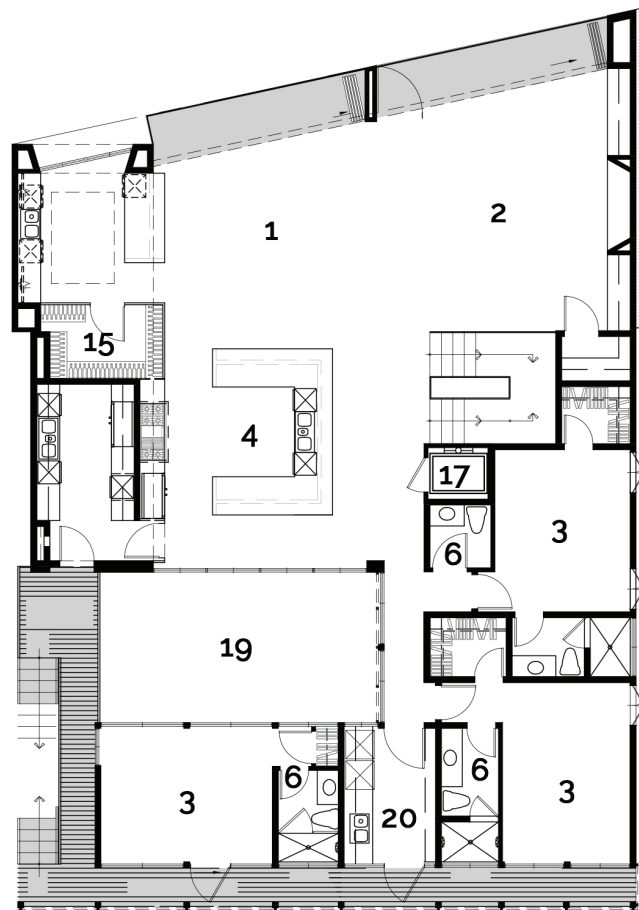
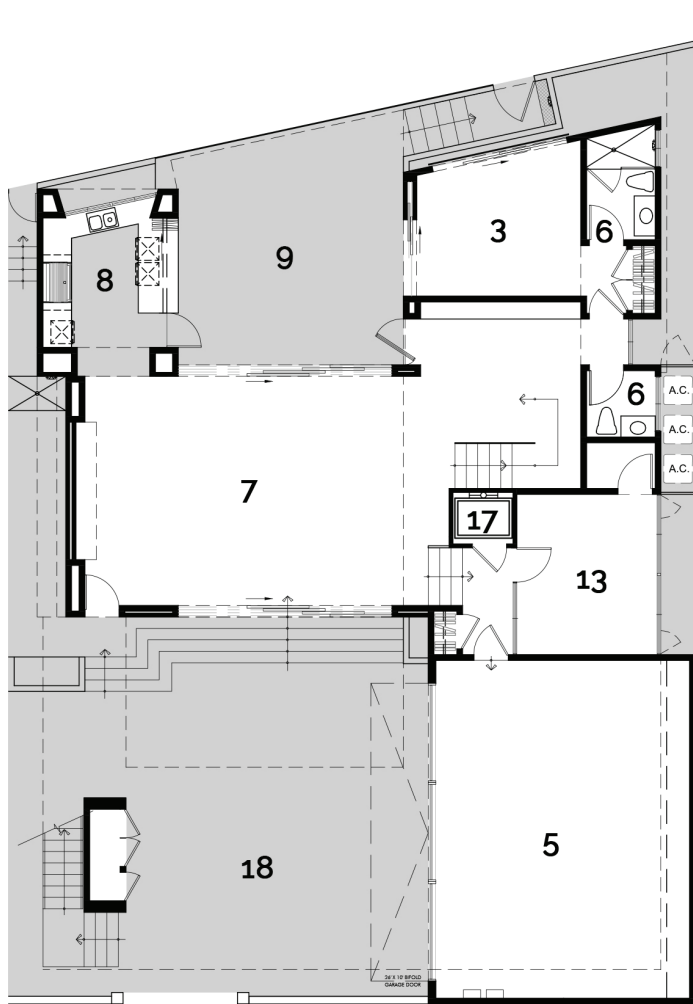




backyard
OR
driveway?



- 1. DINING
- 2. FAMILY ROOM
- 3. BEDROOMS
- 4. KITCHEN
- 5. GARAGE
- 6. BATHROOMS
- 7. ENTERTAINMENT
- 8. BBQ/BAR
- 9. BEACH TERRACE
- 10. COVERED DECK
- 11. ART DECK
- 12. VIEW DECK
- 13. GYM
- 14. OFFICE
- 15. WINE
- 16. SPA
- 17. ELEVATOR
- 18. MOTOR COURT
- 19. OPEN TO BELOW
- 20. LAUNDRY



interior inspiration



Heart of the Home

The all-in-one Great Room and Kitchen on the second level will be the center of the home. Taking the idea of open living to its full potential, open sight lines dominate and allow you to take control of the party.







Dinner and a Show?

Choose a beer and turn on the game, or open a favorite bottle of wine AND the skylight to the jacuzzi above





Clean Lines.

The rear screened deck faces due South- inviting natural light and dynamic shadows all day. Wake up to the sun.

Master Suite





ROOFTOP PARTY



Capture
the
Sun.



Illuminate
the
Night.



5716

BAYSHORE

Architect:

Bryce Sigourney

Urban Arena:

Michael Schrock

Richard Weie

Design Team:

Thuan Ho

Jackie Case

Genee Hoang

Bernardino Francisco

Jorge Regueiro